



# CALVELEX

---

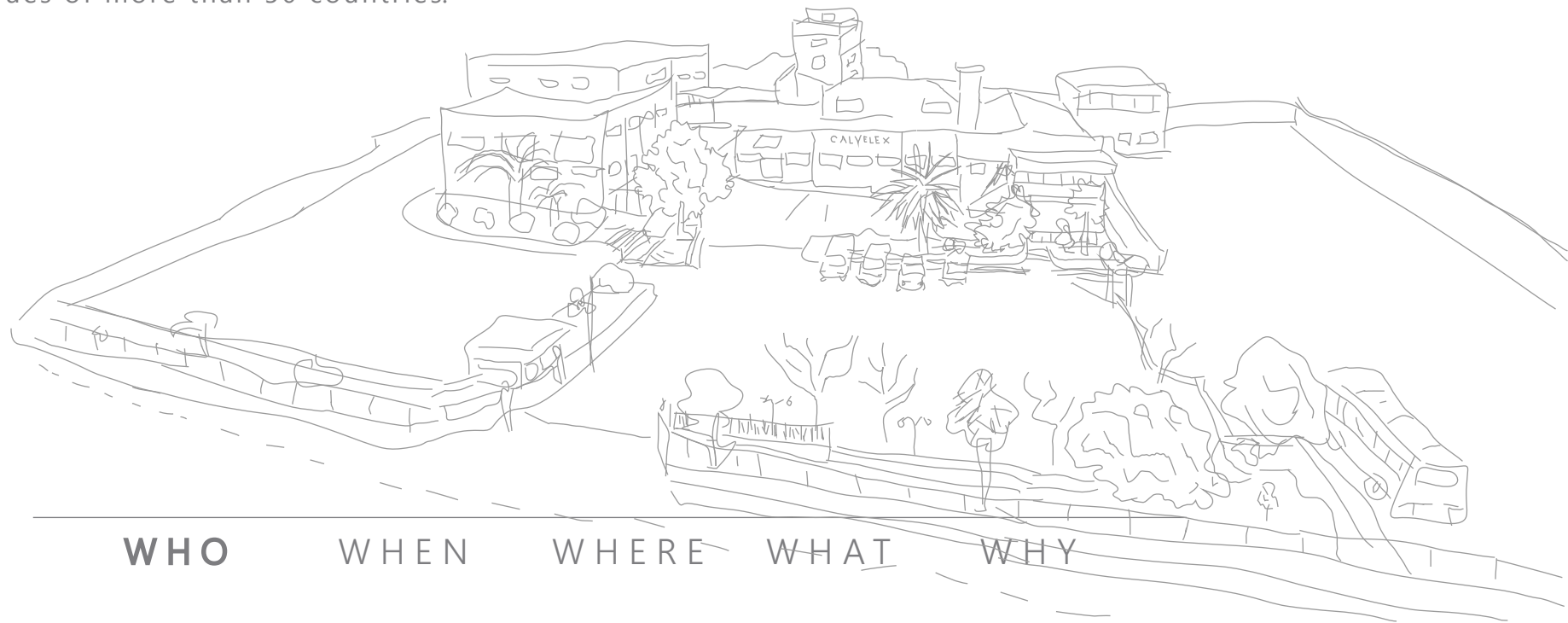
WE  MAKING GARMENTS

## OVERVIEW

CALVELEX is a company specialized in garment manufacturing based in the north of Portugal and as many of the manufacturers, started in 1985 as a family business with only 20 employees and has grown ever since. Nowadays it has 600 employees, divided in two production units, one cutting unit and 2 logistic centers. All the infrastructures are owned by CALVELEX.

Specialized in high end tailored garments with quality standards of higher and luxurious markets, the offered range includes dresses, blazers, trousers, skirts, coats and overcoats.

The daily output of over 3000 pieces arrives to warehouses, shopping departments and boutiques of more than 50 countries.



WHO

WHEN

WHERE

WHAT

WHY

1985



With a long tailoring tradition, CALVELEX is the result of three generations of tailors that preserved their hand craftsmanship roots. Even today, many of the work procedures are handmade, combined with the cutting edge technological systems available at all units.

Details are everything and to manage the entire process, Calvelex flexibility allows us to work on CM, CMT and full vertical service, from material sourcing and pattern making, to delivery under pick and pack system. It is also prepared to customer's needs, by developing any styles, from the most classic to contemporary.

---

WHO

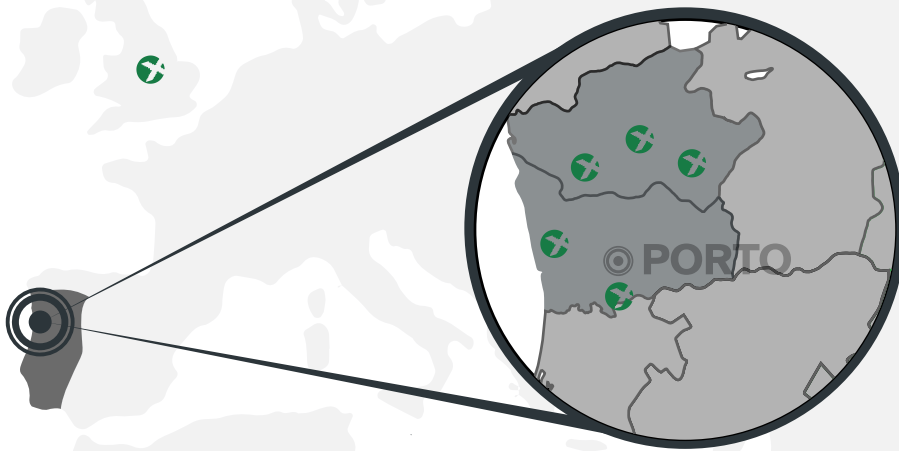
WHEN

WHERE

WHAT

WHY

## PORTO



CALVELEX is located in Lousada, nearby Porto, where our head office is based, as well as one of our production units.

All the remaining production, cutting and logistic units are also around Porto and each one of these facilities assure the capacity of full controlling the entire production.

Calvelex has been concentrating on opening offices in Europe and Asia, to allow a bigger proximity to customers and to improve commercial bounds.

---

WHO

WHEN

**WHERE**

WHAT

WHY



## FACILITIES



WHO

WHEN

**WHERE**

WHAT

WHY

## CORE SERVICES

Experienced with high demand levels of quality and innovation, CALVELEX has developed solutions to support customer's business and to assume a partner role during production process.



WHO

WHEN

WHERE

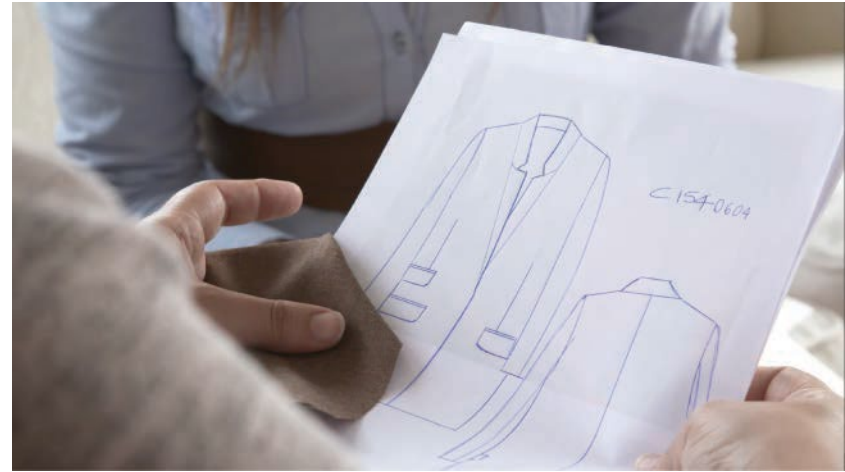
WHAT

WHY



## 1. DESIGN

Customers can ask for material and style sourcing, having access to CALVELEX collections with over 200 style blocks per year, as well as to the biggest fabric library with over 30.000 references and many meters that will allow a quick start at the beginning of every season.



## 2. PRODUCTION

With over 35 years of experience, CALVELEX is used to high quality standards, combining technology with continual investment in the factories and highly skilled workforce.

Prepare to support your business adapting to its requirements.

---

WHO

WHEN

WHERE

**WHAT**

WHY



### 3. AMENDMENTS & INSTALLATIONS

The long experience with workwear has able the ability to provide fitting amends to each garment according to each wearer in short time, by organizing fitting trials, having already provided this kind of service, we count with skilled and experienced workforce on this.

### 4. LOGISTICS

With 2 Pick&Pack centers, a storage of tailored items can be kept in our facilities and experienced teams will be in charge of following-up all procedures related to orders, re-orders, stockholding and deliveries. All the logistic process will be easier and faster.



---

WHO

WHEN

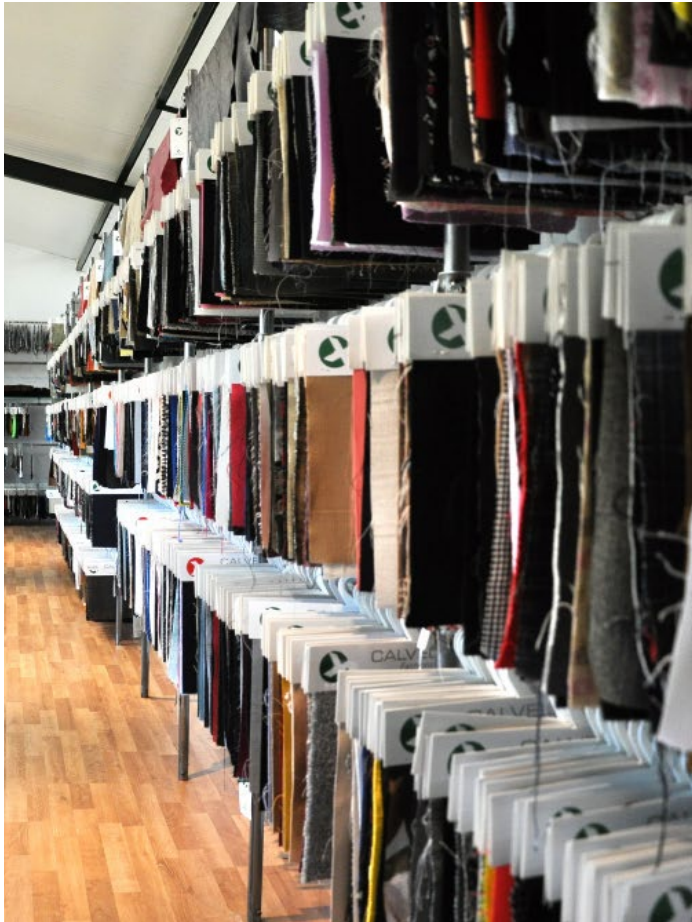
WHERE

**WHAT**

WHY



## THE FABRIC LIBRARY



The demanding rhythm of fashion industry results in creative solutions, which led CALVELEX to develop the biggest fabric library with over 30.000 fabric references, a work that took more than 16 years and nowadays is a fundamental tool to give a quick input into customer's collection. Gathering references from suppliers established all around the world, sourcing and development processes become easier and faster.

This library is available to CALVELEX customers and to all of those who are starting in fashion business.

---

WHO

WHEN

WHERE

**WHAT**

WHY

## FOCUS

Quality with focus on technology and continual investment in the factories and having every garment being inspected 3 times, combined with our attention to detail and highly skilled workforce.

Reliability, by being full transparent throughout the entire production process.

Flexibility whether it means making smaller or bigger orders, reacting quickly to accommodate clients needs.

The main demonstration of CALVELEX quality, reliability and flexibility, is the long term relationship with its customers.



---

WHO

WHEN

WHERE

WHAT

WHY

## NOW

CALVELEX has been supplying a list of well-known costumers in high fashion business as well as some of the biggest hospitality, aircraft and cruise chains.

CALVELEX keeps adjusting its production line to the newest reality and needs, supporting its customers to expand their business.

Besides being a full SEDEX member for over a decade, CALVELEX partners with Better Cotton Initiative, has been recognized as an innovative hub by ANI and more recently, joined the OCS-RCS-GRS-RWS standards.



---

WHO

WHEN

WHERE

WHAT

WHY



CALVELEX HEADQUARTERS

E.N 106 nº 1132

Monte do Calvelo, - Lustosa

4620-256 Lousada

Portugal

Tel. +351 255 880 320

E-mail: [calvelex@calvelex.com](mailto:calvelex@calvelex.com)

[www.calvelex.com](http://www.calvelex.com)

---

WE ❤️ MAKING GARMENTS