



CALVELEX

More than 30 years of textile experience...

WE ❤️ MAKING GARMENTS

Who are we?

OVERVIEW

Calvelex are a garment manufacturer in Northern Portugal that specialise in high end tailored garments. Our sample collection demonstrates a classical style but we are very versatile in what we produce for our clients

We produce skirts, trousers, shorts, dresses, jackets, coats and blouses for both formal and casual wear and are highly flexible with our capabilities. We source high end European fabrics and have a library of 7,500 references

The company was established in 1985 by fourth generation tailors, which is good reflection of both the rich tailoring history in Portugal and our experience. All factories and infrastructure are owned by Calvelex

Location

Porto, Portugal

Employees

700

Factories

3

Daily production

3,100 pieces

Operating space

21,000 sq.m

Time from Porto

35 mins

Founded

1985

Client locations

Europe, USA, Asia

LOCATION



FROM OUR MOST RECENT SAMPLE COLLECTION



OUR SAMPLE COLLECTION



OUR SAMPLE COLLECTION



Our three areas of focus

QUALITY

We cater towards the higher end of the market and have a strong focus on technology and continual investment in our factories

In 2015 we invested 0.5million EUROS in cutting edge technology from GERBER

Our quality assurance is extremely thorough with every garment being tripled QC'd. Combined with our attention to detail and highly skilled workforce we stand out in terms of quality

The best evidence of our quality is our client base

RELIABILITY

We see this as an essential part of our service

Calvelex are open from the start of the process as to what we can achieve and by when. The key is to be transparent throughout the production process

The longevity of our client relationships, in some cases over 25 years and many over 10 years is a good indicator of our exceptional service and reliability

FLEXIBILITY

We understand the importance of being a flexible manufacturer given the way the industry is moving

Our goal is to provide flexibility whether it be making small or large orders or reacting quickly to accommodate our clients needs

State of the art production

LUSTOSA

8,500 m²; 1700 garments per day; 250 employees



Head office



Production floor



Cutting department (Latest GERBER machining)



Modelling room

State of the art production

MATOSINHOS

6,500 m²; 800 garments per day; 220 employees



Factory entrance



Production floor



Pressing floor



Trims storage

State of the art production

CARVALHOS

3,500 m²; 600 garments per day; 210 employees



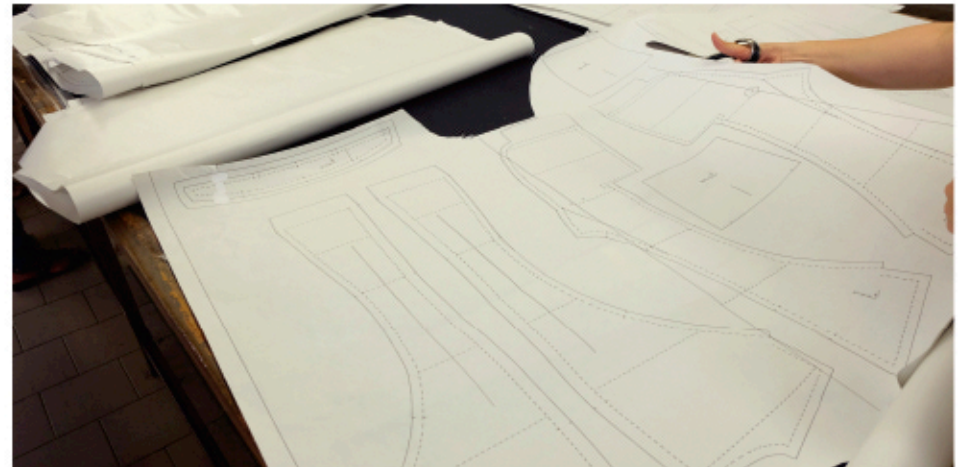
Factory entrance



Production floor



Cutting department



Pattern room

Distribution

OVERVIEW

Two state of the art, fully secure distribution centres

11,500 m² operated by 30 employees



VILA DO CONDE



6,500 m²; 5,000 pieces per day



FAMALICÃO



5,000 m²; 5,000 pieces per day

Currently distribute to over 100 countries

45km from our head office

Concluding thoughts

WHAT WE CAN BRING TO YOU

- ✓ 30 years experience in producing exceptional quality for the higher end of the market. Our client base is good evidence of this
- ✓ Exceptional reliability, which is why we have client relationships that have lasted more 20 years
- ✓ Exceptional relationships with mills across Europe. We hold a library of 7,500 references
- ✓ Ability to react quickly and highly flexible with our production
- ✓ Full member of SEDEX and fully compliant with the Ethical Trading Initiative



CALVELEX

CALVELEX Headquarters

E.N 106 nº 1132
Monte do Calvelo, - Lustosa
4620-256 Lousada
Portugal
Tel. +351 255 880 320
Fax +351 255 880 326

E-mail: calvelex@calvelex.com www.calvelex.com

CALVELEX UK

Office C
3-5 Little Somerset Street
London
E1 8AH

Land Line +44(0)207 702 3733
Mobile +44(0)779 198 3189

E-mail: uk@calvelex.com www.calvelex.com